



£1,050 PCM
The Pastures
Stevenage, SG2 7DF

PROPERTY SUMMARY

This one bedroom house, located in the Chells Manor area of Stevenage has recently been fully refurbished to a high standard and provides bright and modern accommodation. Comprising of; A front porch opening into a spacious, open plan living area with a new contemporary kitchen. The kitchen is fitted in a good range of modern white gloss and black units with a built in oven, inset hob, sink, fridge/freezer and washing machine. French doors from the living area open out to a hard landscaped side garden. Stairs rise to the first floor landing, where you will find a good sized, dual aspect bedroom and a modern re-fitted bathroom with a large walk in shower cubicle. Externally, the property benefits from a side garden with patio area and off road parking to the front.

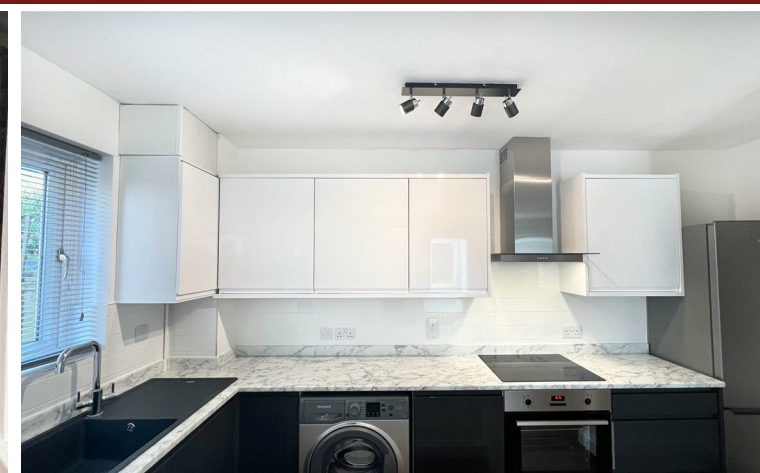
1

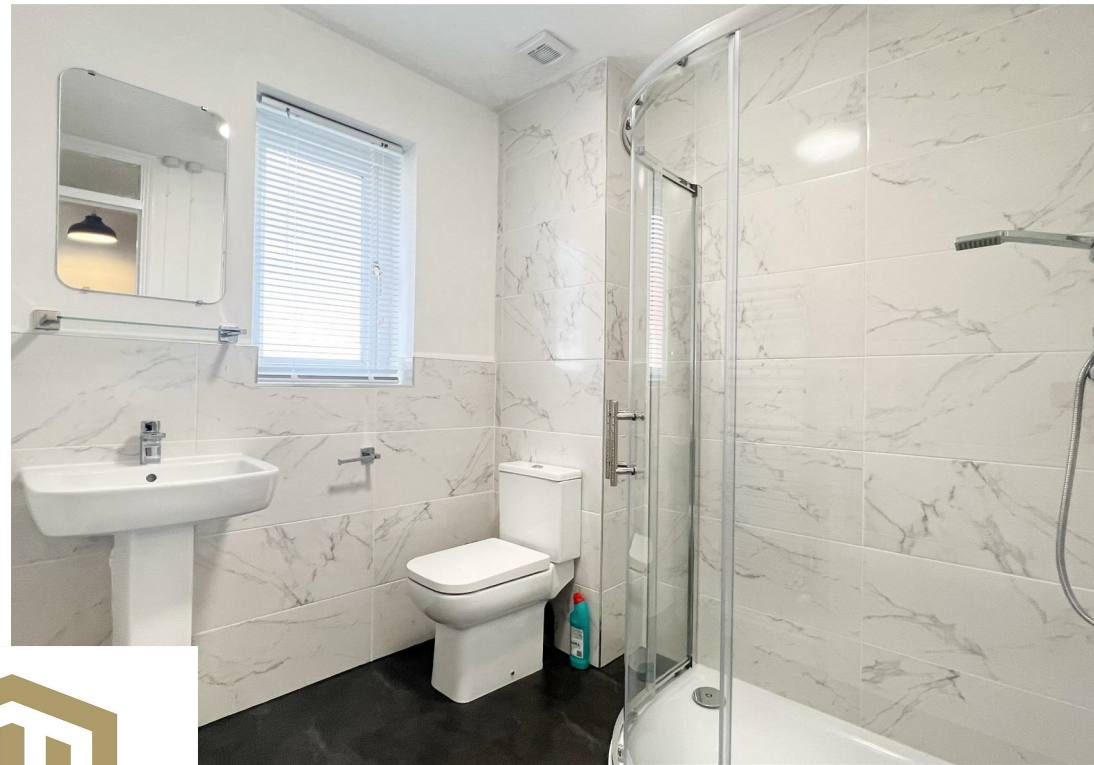


1



1







LOCAL AUTHORITY
Stevenage Borough

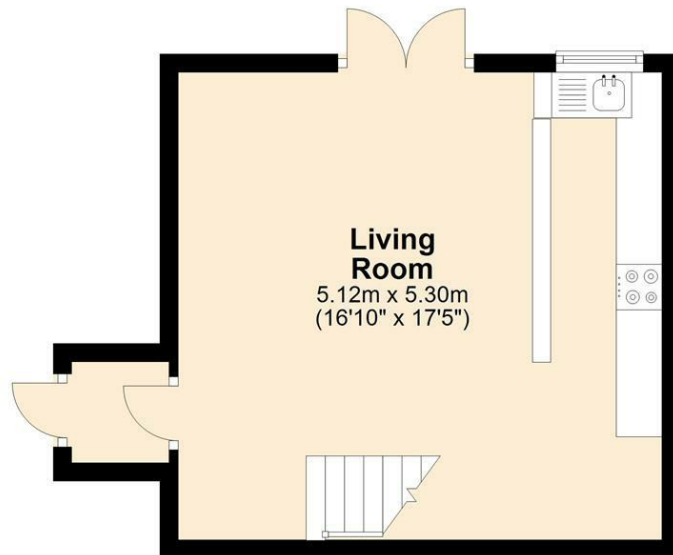
TENURE

COUNCIL TAX BAND
B

VIEWINGS
By prior appointment only

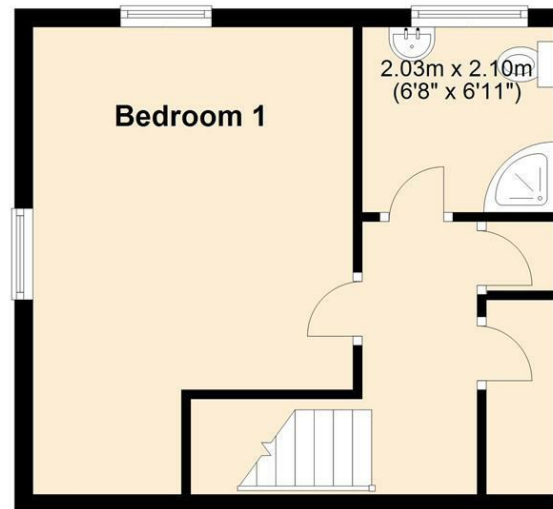
Ground Floor

Approx. 28.5 sq. metres (306.2 sq. feet)



First Floor

Approx. 29.3 sq. metres (315.0 sq. feet)



Total area: approx. 57.7 sq. metres (621.3 sq. feet)

Energy Efficiency Rating		
	Current	Potential
Very energy efficient - lower running costs		
(92 plus) A		
(81-91) B		
(69-80) C		
(55-68) D		
(39-54) E		
(21-38) F		
(1-20) G		
Not energy efficient - higher running costs		
England & Wales		EU Directive 2002/91/EC

Agents Note: Whilst every care has been taken to prepare these particulars, they are for guidance purposes only. All measurements are approximate and are for general guidance purposes only and whilst every care has been taken to ensure their accuracy, they should not be relied upon and potential buyers/tenants are advised to recheck the measurements



OFFICE ADDRESS

Putterills Lettings
123 London Road
Knebworth
SG3 6EX

OFFICE DETAILS

01462 419333
lettings@putterills.co.uk
www.putterills.co.uk